



Ararat Rural City

**ELECTRIC LINE CLEARANCE
MANAGEMENT PLAN
2024 - 2025**



Version Control

Version	Date Prepared	Approved By	In compliance with
Version 1.3	29/3/2016	David Pitches	Electricity Safety (Electric Line Clearance) Regulations 2015 (Vic) Electricity Safety Act 1998
Version 1.4	No Record		
Version 1.5	01/09/2018	Trevor Quick	Electricity Safety (Electric Line Clearance) Regulations 2015 (Vic) Electricity Safety Act 1998
Version 1.6	21/2/2019	Norm Woodhams	Electricity Safety (Electric Line Clearance) Regulations 2015 (Vic) Electricity Safety Act 1998
Version 1.6-Rev1	11/05/2020	Norm Woodhams	ESV Audit
Version 1.7	09/03/2021	Brodie Cookson	Electricity Safety (Electric Line Clearance) Regulations 2020 (Vic) Electricity Safety Act 1998
Version 1.8	11/07/2022	Trevor Quick	Electricity Safety (Electric Line Clearance) Regulations 2020 (Vic) Electricity Safety Act 1998
Version 1.9	29/03/23	Ian Cooper	Electricity Safety (Electric Line Clearance) Regulations 2020 (Vic) Electricity Safety Act 1998
Version 1.10	20/11/2023	Ian Cooper	Electricity Safety (Electric Line Clearance) Regulations 2020 (Vic) Electricity Safety Act 1998
Version 1.11	12/03/2024	Ian Cooper	Electricity Safety (Electric Line Clearance) Regulations 2020 (Vic) Electricity Safety Act 1998

Authorisation Table

This document complies with:		Electricity Safety Act 1998
		Electricity Safety (Electric Line Clearance) Regulations 2020 (Vic)
		Electrical Safety (General) Regulations 2019
		Code of Practice on Electrical Safety for the Distribution Business in Victoria Electricity Supply Industry (The Blue Book 2017)
Reference		
2.10(1)	Prepared by:	Jason Cleary
	Preparation date:	12 March 2024
	Authorised by:	Dr Tim Harrison
	Authorisation date:	
r.10(3)	Date requested by ESV	
	Date submitted to ESV	
r.10(4)	Further information request date:	
	Further information provided date:	
r.10(5)	Amendment request date:	
	Amendment date:	
r.10(7)	Date available at RP office:	

	Date published on website:	
	Date superseded versions removed:	

Contents

1.Introduction r.9(2).....6

2. Preparation r.9(2).....7

 2.1 Process.....7

 2.2References7

2. Contacts r.9(4)(a).....7

 2.1Responsible Person: r.9(3)(a,b,c)7

 2.2 Responsible Person-Preparation of the Management Plan: r.9(3)(a,b,c)7

 2.3 Responsible Persons-Delivering Management Plan Works: r.9(3)(a,b,c)..... 8

 2.424 hour Emergency Contact r.9(3)(a,b,c)8

3.Objectives r.9(4)(e)9

4.Maps and Plans of Applicable Areas r.9(4)(f)10

5.Bushfire Management Zones r.9(4)(g)11

 5.1 Consultation to Review/Confirm HBRA LBRA.....11

 5.1.1Review Process.....11

 5.1.2Post Review at Council11

6.Trees-Type and Locations r.9(4)(h) s.1(10)13

 6.1Native Trees r.9(3)(g)(i)13

 6.2Trees of Ecological, Historical or Aesthetic significance r.9(3)(g)(ii)13

 6.3Trees of Cultural or Environmental Significance; r.9(3)(g)(iii)13

 6.4Habitat Trees r.9(3)(g)(iii) s.1(11).....13

7.0Identifying Significant Trees r.9(4)(i)14

 7.1 Informing ELC Personnel14

 7.2Web Links to source information14

8.0Management Procedures r.9(4)(j)(1)15

 8.1 Pre-declaration Inspections.....15

 8.2 Pruning Works15

 8.3Safety Concerns s.1(20).....16

9.0Allowance for Cable Sag and Sway r.(9(4)(j2)17

10.Procedures-If Impractical to Comply r.9(4)(k)18

 10.1 Alternate Compliance Mechanisms r.9(3)(k-l)18

11. Performance Measures r.9(4)(l)19

12. Audit Process-RP Compliance r.9(4)(m)20

 12.1Audit Roles & Responsibilities20

 12.2Action in event of non-compliance20

13Qualifications and Experience r.9(4)(n).....21

 13.1Monitoring Qualifications and Experience.....22

13.2	Qualifications for assessment of ‘hazard trees’ s.1(8).....	22
14.	Notification and Consultation r.9(4)(o) s.1(17)	24
14.1	Urgent Cutting or Removals	24
14.2	Dispute Resolution Process r.9(3)(q)	24
15	Exceptions s.1(4,5,6,7)	26
	Appendix 1 - Overlays-Ararat Area	27
	Appendix 2 - Maps of Declared Area – Ararat	28
	Appendix 3 - Street Listing for Declared Areas of Ararat.....	33
	Appendix 4 - Indigenous & Significant Trees Near Powerlines	34
	Appendix 5 - Minimum Clearance Spaces.....	35
	Appendix 6 – Standard Notice - Commencement	39
	Appendix 7 – Standard Notice - Delayed Works	39
	Appendix 9 - Notification Urgent Cutting.....	41
	Appendix 10 - Powerline Clearance Inspection (preseason)	42
	Appendix 11 - Daily Works Report	43
	Appendix 12 - Weekly Audit Pro-Forma.....	43
	Appendix 13 - Training Matrix	45
	Authorisation Page.....	45



1. Introduction r.9(2)

This plan details the Ararat Rural City Council's processes in complying with the Electricity Safety Regulations 2020 (Vic) and is relevant to vegetation in the vicinity of overhead powerlines that may encroach on the minimum clearance space of the powerlines, as prescribed in the Electricity Safety Act 1998 and the Electricity Safety (Electric Line Clearance) Regulations 2020 (Vic).

The regulations are in place to prescribe the management of vegetation around electric lines to minimise the risk of overhead electric lines causing fire, disruption to power or other risks to the community.

Ararat Rural City Council is responsible under the Act for trees in the "DECLARED" areas of the municipality these are street trees in urban areas but also include trees on public land

This plan details the management responsibilities, procedures, and practices to be adopted and observed by the Ararat Rural City Council in managing vegetation in the vicinity of overhead electric lines within the declared areas of Ararat.

A copy of this plan is available on Councils Website at;
<https://www.ararat.vic.gov.au/council/council-documents/public-documents>
or from the office of the Responsible Person at 59 Vincent Ararat

2. Preparation r.9(2)

An Electrical Line Clearance Management plan must be prepared by a “Responsible Person”, in this case the Ararat Rural City Council, in line with the Code of Practice for Electric Lines Clearance before 31 March each year.

The document will be updated annually to ensure it always complies with the relevant Electricity Safety Act 1998 and Electricity Safety (Electric Line Clearance) Regulations or its preceding documents.

A process has been developed to ensure that the ELCMP is reviewed, amended, and internally authorised annually before 31 March.

2.1 Process

- The preparation and authorisation of the ELCMP is listed as an action under the responsibilities of the Coordinator Works
- The review, amendment and authorisation process will commence in February each year.
- An authorisation table has been included in this document to ensure each component is completed
- The authorisation table acts as a record of the process

2.2 References

The annual plan preparation will include a review of associated regulations, standards and other source material including but not limited to those listed below;

- Electricity Safety Act 1998
- Electricity Safety (Electric Line Clearance) Regulations 2020 (VIC)
- Electrical Safety (General) Regulations 2019
- The Blue Book 2017
- Environment Protection and Biodiversity Conservation Act 1999
- Flora and Fauna Guarantee Act 1988 (Vic)
- Aboriginal Heritage Act 1995
- Planning Provisions and Planning Schemes
- Pruning of Amenity Trees AS4373 (current version)

2. Contacts r.9(4)(a)

2.1 Responsible Person: r.9(3)(a,b,c)

Name:	Ararat Rural City Council
Address:	59 Vincent St Ararat Vic 3377
Council Office Telephone No:	(03) 530550200
Email:	icooper@ararat.vic.gov.au
Chief Executive Officer:	Dr Tim Harrison

2.2 Responsible Person-Preparation of the Management Plan: r.9(3)(a,b,c)

Name:	Ian Cooper
Position:	Quality & Service Coordinator
Business Address:	59 Vincent St Ararat Vic 3377
Mobile:	0438 801 284
Email Address:	icooper@ararat.vic.gov.au

2.3 Responsible Persons-Delivering Management Plan Works: r.9(3)(a,b,c)

Position: [OBJ] Parks & Gardens Supervisor
Business Address: 59 Vincent St Ararat Vic 3377
Email Address: jcleary@ararat.vic.gov.au

Position: [OBJ] Arborist/Gardener
Business Address: 59 Vincent St Ararat Vic 3377
Email Address: ngardiner@ararat.vic.gov.au

2.4 24-hour Emergency Contact r.9(3)(a,b,c)

Telephone: [OBJ] (03) 53550200 and follow prompts

3. Objectives r.9(4)(e)

The primary objectives of the plan:

The following are identified as the primary objectives of this plan in fulfilling stated duties set out in the Electricity Safety (Electric Line Clearance) Regulations 2020.

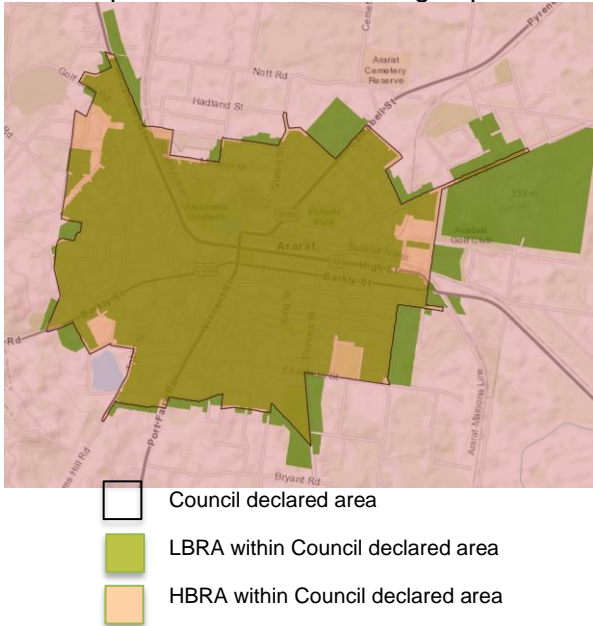
- To ensure public safety in relation to minimising the likelihood of contact between powerlines and vegetation, thereby improving electrical safety, minimising the likelihood of fire starts and ensuring reliability of electrical supply
- To maintain and enhance the existing tree population for inheritance by future generations by preserving tree health, aesthetic appearance, and amenity value;
- To achieve compliance with the Electricity Safety (Electric Line Clearance) Regulations 2020;
- To ensure all tree pruning works are carried out comply with the Australian standard AS 4373 – 2007 Pruning of Amenity Trees; and to by doing so provide a safe working environment for both employees and contractors working within the vicinity of powerlines
- Protection of areas of important vegetation; which may be deemed as such on the basis of those areas containing botanically, historically, or culturally important vegetation, remnant vegetation or vegetation of outstanding aesthetic or ecological significance, and/or the habitat of rare or endangered species;
- Management of vegetation to maximise the environment, biodiversity, and amenity value of the Council's trees;
- To achieve community satisfaction with the way the necessary works are carried out.

4. Maps and Plans of Applicable Areas r.9(4)(f)

This plan applies to the Declared area of Ararat, the map of the land to which the management plan applies is attached as Appendix 2. Appendix 1 details the associated Vegetation and cultural heritage overlays.

5. Bushfire Management Zones r.9(4)(g)

The declared zone of Ararat is LBRA however there are some lines that do fall within the HBRA. Note- This zoning is currently under review with CFA (Country Fire Authority) and Powercor and will be updated with minor changes prior to the upcoming fire season. (20/21)



5.1 Consultation to Review/Confirm HBRA LBRA

The Country Fire Authority of Victoria in consultation with the relevant power companies review Fire Hazard Ratings in line with section 80 of the Electricity Safety Act 1998, for Council areas once every four years.

This review classifies land as “high” or “low” fire risk in relation to power lines and affects the tree pruning regime for vegetation beneath power lines. Trees in high-risk zones will undergo more frequent and rigorous pruning to minimise risk of fires igniting from power line sparks.

5.1.1 Review Process

CFA prepares base maps of the Fire Hazard Ratings (status), and convenes a meeting involving:

- Manager Community Safety (CFA)
- Vegetation Management Officer (CFA)
- Fire Safety Officer (CFA)
- CFA geographic mapper (CFA)
- Fire Hazard Ratings project manager (CFA)
- Power Company representative
- Council’s Municipal Fire Prevention Officer
- Council’s Town Planner
- Council’s members with vegetation knowledge (e.g. Nat Resources Officer Arborist, Parks Management, etc.)

5.1.2 Post Review at Council

- Post-meeting Fire Hazard Ratings maps with council edits produced & sent to parties involved for confirmation.

- Once confirmed and finalised, the updated digital spatial layer is sent to the responsible power companies to manage vegetation with respect to power lines.
- Maps are included in the Council ELCMP for the relevant year

6. Trees-Type and Locations r.9(4)(h) s.1(10)

The location of areas containing trees which may need to be cut or removed to ensure compliance with the Code are listed by street name in *Appendix 3*.

Cutting trees of any of the trees in the following categories will be restricted to the minimum extent necessary to ensure compliance with the requirements of this Code or to make an unsafe situation safe. Restrict cutting to AS 4373 – 2007 Pruning of Amenity Trees; and cut frequently if required to maintain clearance space.

Removal of trees in any of these categories may only occur if pruning to compliance would make the tree unviable. This assessment must be carried out by a 'suitably qualified arborist' holding a National Certificate Level V in Horticulture (Arboriculture) including the "Assess Trees" module, or an equivalent qualification; and at least 3 years of field experience in assessing trees.

6.1 Native Trees r.9(3)(g)(i)

Indigenous trees subject to this management plan that are non - planted street trees within the urban areas of Ararat are shown in *Appendix 4. - Significant Trees Near Powerlines*.

6.2 Trees of Ecological, Historical or Aesthetic significance r.9(3)(g)(ii)
(as listed in a planning scheme)

Trees that are listed in a planning scheme to be of ecological, historical, or aesthetic significance that are subject to this management plan are shown in *Appendix 4. - Significant Trees Near Powerlines*.

6.3 Trees of Cultural or Environmental Significance; r.9(3)(g)(iii)

Trees that are of cultural or environmental significance that are subject to this management plan are shown in *Appendix 4. - Significant Trees Near Powerlines*.

6.4 Habitat Trees r.9(3)(g)(iii) s.1(11)

At the present time there are no identified habitat trees within the declared area of Ararat that are affected by Line Clearance.

The pre-season inspection regime includes an assessment of each for tree evidence of fauna activity, where fauna activity may be identified, this is reported to DEWLP to make an informed assessment of the tree in question.

If a tree is confirmed as a habitat tree for threatened fauna by DEWLP, the tree will be added to the register in the ELCMP, and line clearance staff will be updated and provided with a copy of the register by the responsible officer.

Advice on the breeding season information is also provided by DEWLP and subject to their advice, pruning may be bought forward or pushed back to ensure it occurs outside of the breeding season, where this is impractical fauna translocation would be considered.

7.0 Identifying Significant Trees r.9(4)(i)

Native trees (indigenous or non-planted native trees), trees of ecological, historical, or aesthetic significance, or trees of cultural or environmental significance will be identified in several ways including:

- As identified by Council's Arborist during Annual Surveys and identified by a 'suitably qualified arborist' who holds a National Certificate Level IV in Horticulture (Arboriculture) including the "Assess Trees" module, or an equivalent qualification; and at least 3 years of field experience in assessing trees.
- As listed on a Council planning scheme overlay.
- As listed in the Heritage Register within the meaning of the Heritage Act 1995
- Included in the Victorian Aboriginal Heritage Register established under the Aboriginal Heritage Act 2006
- Flora or a habitat of fauna listed as threatened in accordance with section 10 of the Flora and Fauna Guarantee Act 1988
- Flora listed in the Threatened Flora List with a conservation status in Victoria of 'endangered' or 'vulnerable' or 'critically endangered'
- A habitat of fauna which is listed in the Threatened Invertebrate Fauna List

7.1 Informing ELC Personnel

All ELC personnel are provided with specific annual instruction from the Parks & Gardens Supervisor regarding significant trees within the declared area of Ararat. Each member of the team is also provided with a current copy of the ELCMP that contains the registers of significant and indigenous trees.

7.2 Web Links to source information

The Victorian Heritage Register

<http://vhd.heritagecouncil.vic.gov.au/>

The Victorian Aboriginal Heritage Register

<https://w.www.vic.gov.au/aboriginalvictoria/heritage/heritage-toolsand-publications/victorian-aboriginal-heritage-register.html>

Department of the Environment, Land, Water and Planning, Flora and Fauna Guarantee Act 1988, Threatened List

<https://www.environment.vic.gov.au/conserving-threatened-species/flora-and-fauna-guarantee-act-1988>

The DEPI Biodiversity Interactive Mapping Website

<http://maps.biodiversity.vic.gov.au/viewer/?viewer=NatureKit>

Environment Protection and Biodiversity Conservation Act 1999 (EPBC Act), List of threatened flora, List of threatened ecological communities, List of threatened fauna

<http://www.environment.gov.au/epbc/about/epbc-act-list#species>

Protected Matters Search Tool website

<http://www.environment.gov.au/webgis-framework/apps/pmst/pmst.jsf>

Council records, including the relevant zoning and overlay controls in the planning scheme.

<https://mapshare.vic.gov.au/vicplan/>

8.0 Management Procedures r.9(4)(j)(1)

The Ararat Rural City Council ELCMP affects almost 400 trees within the declared area of Ararat.

This section details the management procedures the responsible person is required to adopt to ensure compliance with the code.

8.1 Pre-declaration Inspections

An annual inspection is carried out by Council arboriculture staff prior to the fire season in early September of each year, staff assess the vegetation for regrowth potential and any other potential hazards. (*See Appendix 10-Powerline Clearance Inspection.*)

Cyclic pruning of street trees is completed annually for all areas before the declared fire season based on the data recorded during the inspection.

Ararat Rural City Council staff assess every street tree in the declared area of Ararat to identify all Council managed trees which currently infringe or will infringe on the prescribed Clearance Space before the next pruning cycle.

Ongoing continual visual audit and inspection of clearance space continues throughout the year however this is not formally documented.

8.2 Pruning Works

All powerline pruning works are conducted in accordance with AS 4373-2007 "Amenity Tree Pruning" and clearance distances are determined as referenced in the code of practice for electric line clearance, (Schedule 2).

See Appendix 5 - Minimum Clearance Spaces

All staff engaged in powerline clearance activities are appropriately trained and qualified.

Council has a well-established and open dialogue in place with Powercor's Council Liaison Officer to ensure both parties have a clear understanding of each organisation's priorities.

This is achieved via regular contact throughout the year and an annual meeting with Powercor and Ararat Rural City Council's responsible staff members prior to commencement of the annual inspection program.

Pruning results are recorded manually identifying the tree's physical street/road address, powerline voltage, and other attributes as per pro-forma in *Appendix 11-Daily Works Report*.

Trees are pruned to ensure foliage will remain free of the prescribed Clearance space until the next pruning cycle, trees that staff consider cannot be successfully pruned as outlined above will be brought to the attention of the Ararat Rural City Council's Coordinator Parks and Gardens.

The Supervisor Parks and Gardens will then inspect the tree and if it is determined that the tree cannot be pruned to comply with the Electricity Safety (Electric Line Clearance) Regulations 2020 (Vic), Council will investigate and implement an alternative method to ensure compliance.

Reports of non-compliance from Powercor, residents or other sources will be investigated by Council's nominated responsible person, and works will be carried out to rectify any non-conformances where required.

The degree of tree pruning will be adjusted considering observed growth rates, depending on the significance of the tree, to ensure compliance with the Electricity Safety (Electric Line Clearance) Regulations 2015.

The formula used to calculate the amount of vegetation to be removed is:

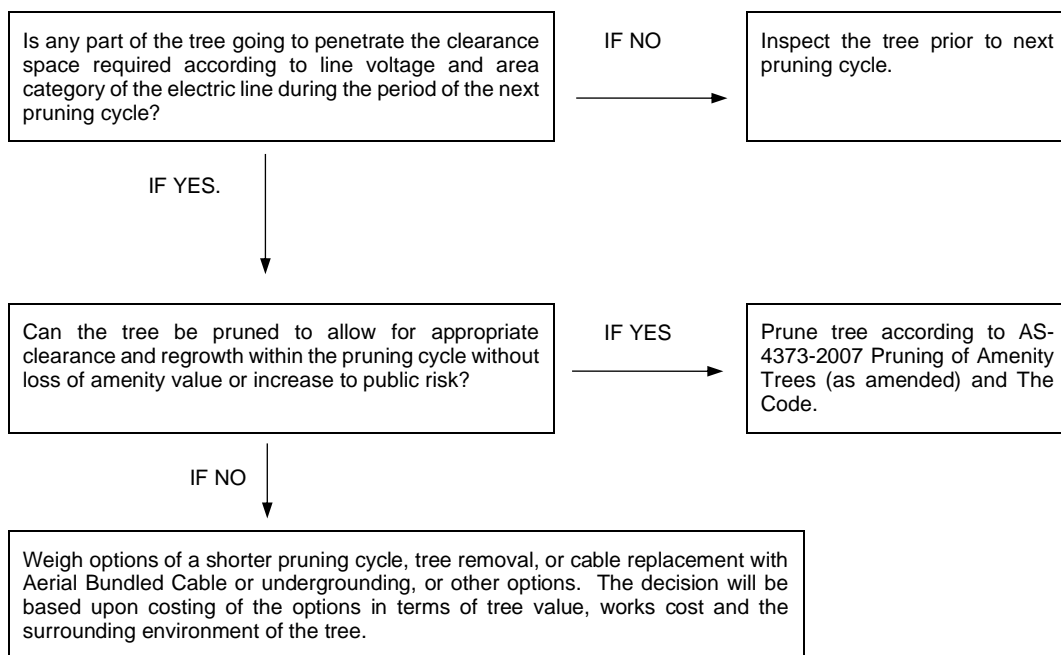
$$\text{Clearance (m)} = \text{regrowth (m/year)} \times \text{cycle (1 year) in line with schedule}$$

The species of any new trees or other vegetation planted in the vicinity of overhead powerlines will be specifically selected to mature well below the powerlines.

Where possible, new developments will be encouraged to install underground power and Ararat Rural City Council is always keen to be engaged with Powercor to look at engineering solutions in relation to powerline clearances including using insulated cables such as Aerial Bundled Cable to reduce the clearance space required between powerlines and vegetation.

Council is also in regular contact with Powercor.

The following diagram broadly outlines the decision-making process regarding maintaining line clearance.



8.3 Safety Concerns s.1(20)

In situations where Council has concerns around safety relating to the cutting or removal of a tree in the declared area of Ararat for which Council has responsibility Council will consult with the local distribution company.

9.0 Allowance for Cable Sag and Sway r.(9(4)(j2))

Unexpected conductor movement may occur under moderate wind, network faults or changes in conductor heating or cooling factors.

The code includes minimum clearance space detail for line spans up to 100m within LBRA and those up to 45m in HBRA. For spans exceeding 100m in LBRA or 45m in HBRA, the minimum clearance space must include an additional allowance for sag and sway.

Appropriate allowance for sway and sag changes must be applied in accordance with advice sought from the electrical asset owner.

Under the Ararat Rural City Council ELCMP it is the authorised officer's duty to ensure trees are pruned to maintain the Clearance Space free of vegetation for the period of the program.

Previous performance indicates that clearances within the declared area of Ararat can be maintained without an additional allowance for sag and sway.

If required, The Ararat Rural City Council will determine an additional distance for sag and sway in consultation with Powercor as the relevant Distribution Business in the declared area. There is no electric rail or tramway supply within the area.

An annual meeting is held with the distribution company immediately following the line clearance inspection program and prior to the commencement of the annual line clearance works. This will be in the last two weeks of August each year, with regular contact maintained with the distribution company throughout the year on "as required" basis.

Distribution Business:	Powercor
Name of contact:	Jen Birtles
Position:	Council Liaison Officer- Powercor
Address:	740 Ballarat Road, Ardeer 3022
Office Telephone No.:	(03) 9683 4851
Email:	Jbirtles@powercor.com.au

Should an allowance for sag and sway be determined as necessary under the above process, this will be documented on the inspection records pro-forma (see Appendix 10- Powerline Clearance Inspection) prior to the commencement of the pruning program.

At completion of the works specific to lines requiring additional pruning to compensate for sag and sway the actual additional pruning distance will also be recorded on the Daily Works Report (Appendix 11) and kept on file for a minimum of 7 years

10. Procedures-If Impractical to Comply r.9(4)(k)

This section addresses the procedures to be adopted if it is not practicable to comply with the requirements of AS4373 while cutting a tree in accordance with the Code.

In situations where trees cannot be effectively pruned in accordance with AS4373 the Coordinator Parks and Gardens will be notified, the coordinator will then inspect the tree and if it is determined that the tree cannot be pruned to comply with the Electricity Safety (Electric Line Clearance) Regulations 2015 (Vic), Council will investigate and implement an alternative method to ensure compliance.

10.1 Alternate Compliance Mechanisms r.9(3)(k-l)

At no stage in the past has Ararat Rural City Council encountered a situation as described above in item 10, and there is no reason to expect this will occur in the short-term future, as such Ararat Rural City Council does not propose to request alternative compliance mechanisms.

11. Performance Measures r.9(4)(l)

The following sets out the key performance indicators and the relevant measure for each item: -

Item	KPI	Measure
1	Review of the ELCMP	Must be complete by 31 March each year
2	Completion of annual inspections according to schedule	All inspections to be completed prior by 31 August annually
3	Completion of all pruning according to schedule	All cutting to be completed Declaration of Fire Period
4	The number of trees in breach of the code between pruning cycles	No trees should be in breach
5	Quality of work (pruning techniques)	All work must be in line with AS4373
6	The number of customer complaints/ requests for pruning	No more than 3 customer requests annually
7	Emergency Clearances	Nil annually

These hard copy records shall be kept in the 'Line Clearance' file in the filing cabinet in the Parks and Gardens Supervisor's office.

All auditing will be performed by the either the Parks and Gardens Supervisor or the Quality & Service Coordinator.

12. Audit Process-RP Compliance r.9(4)(m)

Internal audits shall be carried out weekly during annual line clearance activities to ensure that all requirements outlined in this Management Plan are being met and any non-conformity with the Code is identified.

12.1 Audit Roles & Responsibilities

Responsibility for internal auditing of compliance lies primarily with the Councils Parks and Gardens Supervisor, who has some 5 years' experience with line clearance works and is Councils primary liaison officer with Powercor.

Weekly Works Audit - Staff are required to provide to the Parks and Gardens Supervisor a Daily Works Report of trees actioned at the end of each day. The Parks and Gardens Supervisor will check one day's work from the Daily Works Report at random during that week and record the results and issue any non – compliance notices to the work group for rectification. (See *Appendix 12-Weekly Audit Proforma*)

Audit results will be recorded and maintained at the Council Offices

12.2 Action in event of non-compliance

Where remedial action can be satisfactorily carried out by Council Staff or Council's contractor this work shall be put in hand as soon as possible.

Where assistance is required by others such as the Distribution Company, then the consultation with the necessary authorities shall be used to assist in attending to the non-compliance as soon as possible.

Following investigation of the non-compliance and the establishment of the cause, the importance of compliance with the Management Plan and the Code will be drawn to the attention of the persons concerned.

- on the first occasion they will be given verbal instruction, and the incident recorded on file
- if a second occasion occurs the notification shall be in writing, and incident recorded on file
- after a third occasion, the training program will be reviewed, and more serious action considered if it is the same offender

This section details the qualifications and experience that the responsible person must require of the persons who are to carry out the inspection cutting or removal of trees.

All personnel involved in line clearance activities must have an

Only **qualified persons** can prune or clear the whole or any part of a tree within 2 metres of a low voltage wire or 6 metres of a high voltage wire.

All persons inspecting and pruning trees under this plan must have qualifications, experience, training, and assessment to ensure competency in the performance of vegetation management work and have;

- Completed a training course approved by ESV;
- Technical knowledge or sufficient experience to perform the duty concerned;
- Been endorsed in writing by the organisation (e.g. the employer) to perform the work;
- Undertaken formal training
- A minimum of three years' experience

As well as appropriate knowledge of, and where applicable training in;

- Electricity Safety Act 1998
- Electricity Safety (Electric Line Clearance) Regulations 2020 (Vic)
- Electrical Safety (General) Regulations 2019
- Code of Practice on Electrical Safety for the Distribution Business in Victoria Electricity Supply Industry (The Blue Book 2017)

A **qualified person** is defined as a person who holds a current certificate specifying satisfactory completion of a training course in tree clearing, approved by Energy Safe Victoria.

The Council shall ensure that suitably trained workers conduct the work on trees with Council authorisation and maintain specified body clearances, with onsite supervision by a supervisor holding a formal qualification, to the level of national Certificate Level III in Horticulture or its equivalent.

The following certificates appropriate for the individual tasks carried out will be a minimum standard for any workers onsite.

Description	Designation (or Updated Equivalent)	Refresher
Certificate II ESI Vegetation Control	UET20321	
Blue Book Training	Incl in UET20321	
Operate Maintain Chainsaw	AHCMOM213	
Licence operates boom type EWP	TLILIC2005	Annual
Apply OHS	UEENEEE001B	Annual
Environment/sustainability compliance	UETTDREL13	
Safe work near live electrical appliances	UETTDREL14	Annual
ESV Annual Refresher - General Safety Requirements	ESVSAFETY	Annual
ESV Annual Refresher - Approach to Electrical	ESVAPPROACH	Annual

Apparatus in accordance with ESV Rules		
ESV Annual Refresher - Work in the Vicinity of Electrical Apparatus	ESVVICINITY	Annual
Perform EWP rescue	UETDRRF002	Annual
Perform EWP controlled descent escape	UETTDRRF08	Annual
First Aid	Level 2	Biannual
CPR	CPR	Annual
Implement Traffic Management Plan	RIIWHWS205B	Biannual
Control Traffic-Stop/Slow bat	RIIWHWS302B	Biannual

13.1 Monitoring Qualifications and Experience

The following training and authorisation requirements and actions will be applied to ensure acceptable levels of competence required to demonstrate skills, knowledge, and experience, both upon appointment and ongoing:

- Both initial and refresher training are to be provided
- Skills and competence shall be maintained through regular refresher training
- All training to be provided by a Registered Training Organisation
- A record of the sighting of required certificates and associated documents shall be kept by the Infrastructure Department and shall be updated annually.

Ararat Rural City Council maintains a training register for all employees including staff engaged in the ELC program to ensure all certifications are up to date. This is an automated system that flags the requirement for any refresher training.

Should any employee be found actively engaged in ELCM work without the appropriate qualification and/or training, they will immediately be removed from the site. Councils disciplinary procedure will be applied, and this can result in termination of employment should the breach be of sufficient magnitude.

13.2 Qualifications for assessment of 'hazard trees' s.1(8)

If a person identifies a tree as likely to fall onto or otherwise encounter an electric line, the tree may be cut or removed provided that the tree has been assessed by a suitably qualified arborist and that assessment confirms the likelihood of contact with an electric line having regard to foreseeable local conditions. This assessment must take into consideration local conditions including:

- significant vegetation
- protected flora and fauna
- habitat
- local knowledge
- visual assessment
- environmental conditions
- vegetation regrowth patterns

A 'suitably qualified arborist' must have a National Certificate Level V in Horticulture (Arboriculture) including the "Assess Trees" module, or an equivalent qualification; and at least 3 years of field experience in assessing trees.



14. Notification and Consultation r.9(4)(o) s.1(17)

As a minimum resident/owner consultation is required prior to the annual line clearance program and if trees are to be cut or removed or if there is a change of pruning practice.

In circumstances where clearing does not occur within the 60 days period renotification will occur through Councils social media network and be posted on Councils website.

(See Appendix - 7 Standard Notice-Delayed Works)

If a tree is to be removed a letter will be sent to the nearest property address of the street tree and to a minimum of 5 neighbouring properties on either side of the street (ie-minimum of 10 properties). Copies of notification letters are included in *Appendix 8-Vegetation Removal*.

14.1 Urgent Cutting or Removals

If urgent cutting is undertaken – because of encroachment of growth of trees that was not anticipated in the management plan; or during the fire danger period declared under the Country Fire Authority Act 1958 - trees must not be removed or cut further than 1 metre from the minimum clearance space around the electric line. *(Appendix 9-Notification Urgent Cutting)*

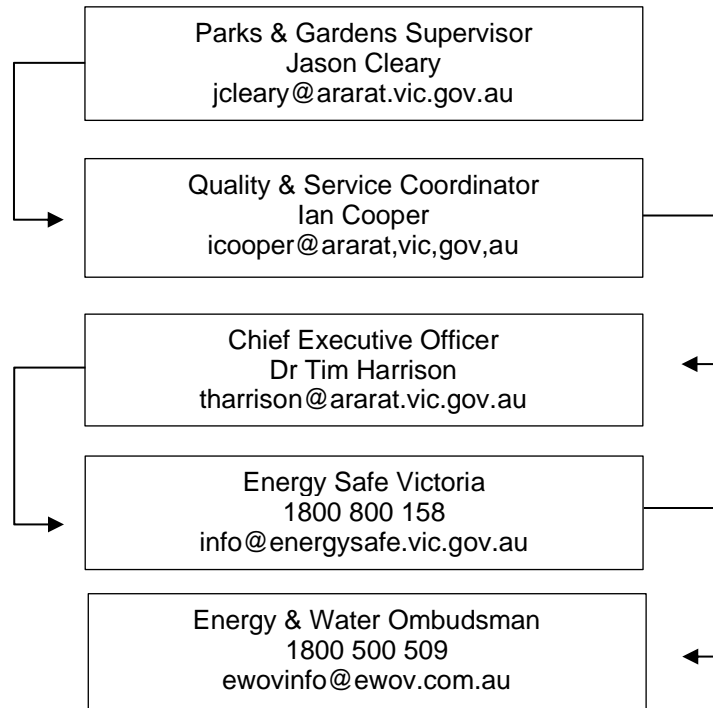
- In the event of urgent cutting or tree removal notice must be given as soon as possible to:
- All affected persons; and
- The occupier of the land on which the tree was cut or removed; and
- If a tree was removed – the owner of the land on which the tree was removed.
- The notice shall include why the tree was cut or removed, where the tree was and the date of the last inspection. Records of these details are to be kept for at least 5 years.

14.2 Dispute Resolution Process r.9(3)(q)

Ararat Rural City Council has an established process for managing a variety of disputes, this system is also utilised for any disputes relating to electric lines clearance.

All enquiries received by Council are recorded on Council's internal customer relationship management system (CRMS). Each enquiry has a unique identification number that is monitored electronically until the enquiry is resolved. If initially a customer is not satisfied, a clear, hierarchal process is followed.

In situations where the Ararat Rural City Council cannot resolve the issue and internal processes have been exhausted, Council will direct the person to the responsible person at Energy Safe Victoria, or in some cases to the State Energy and Water Ombudsman.

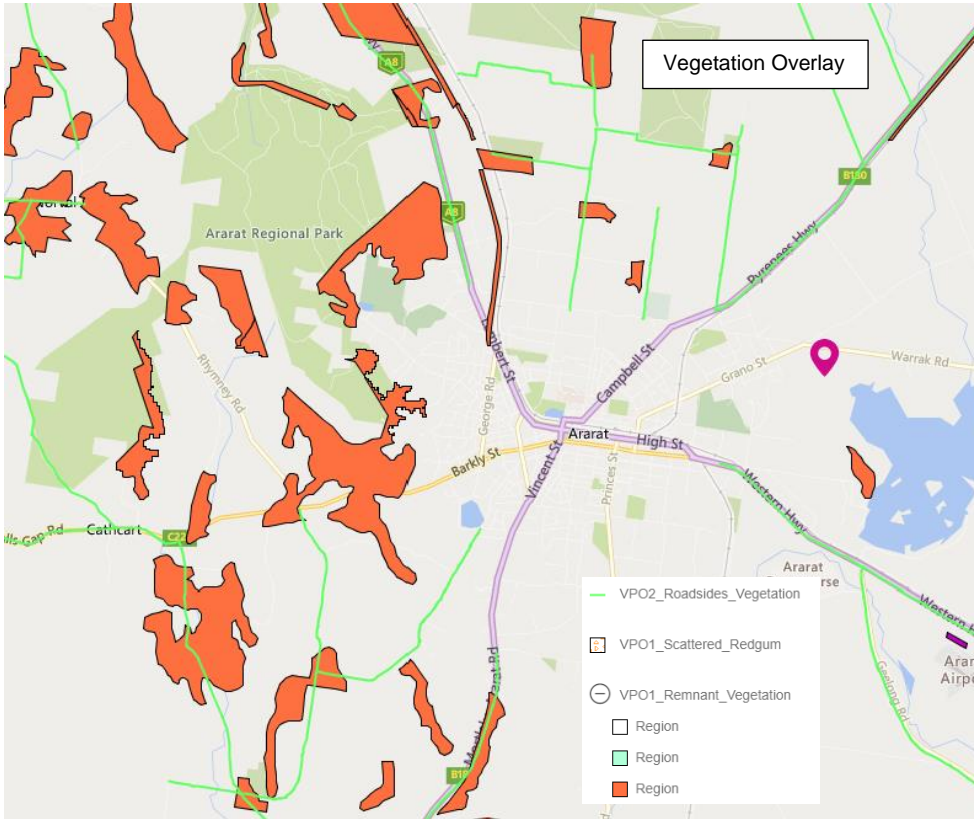


15 Exceptions s.1(4,5,6,7)

Ararat Rural City Council will **not** be seeking exceptions in relation to minimum clearance spaces for;

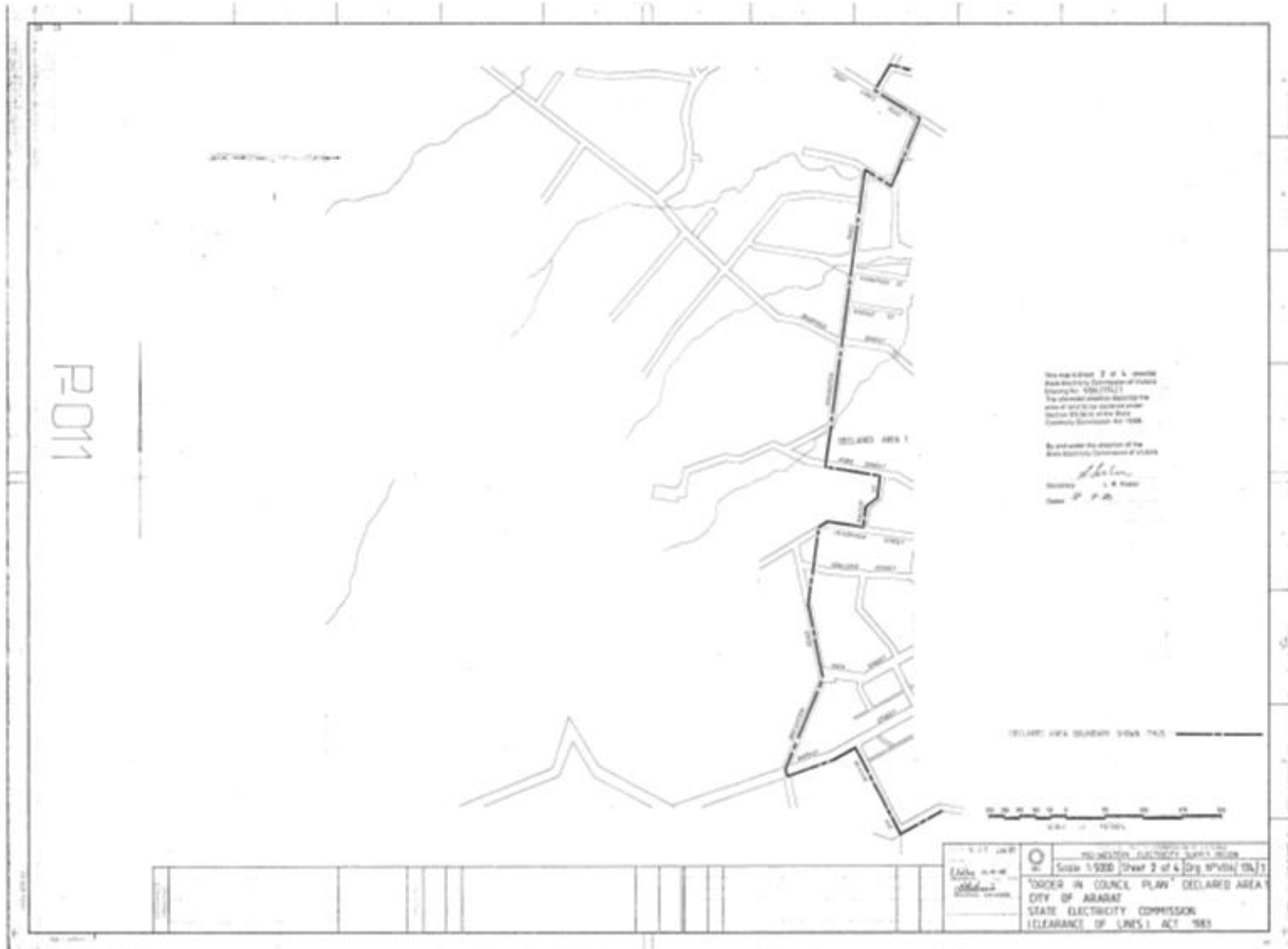
- structural branches around insulated low voltage electric lines
- small branches around insulated low voltage electric lines
- small branches growing under uninsulated low voltage lines
- structural branches around uninsulated low voltage electric lines in low bushfire risk areas

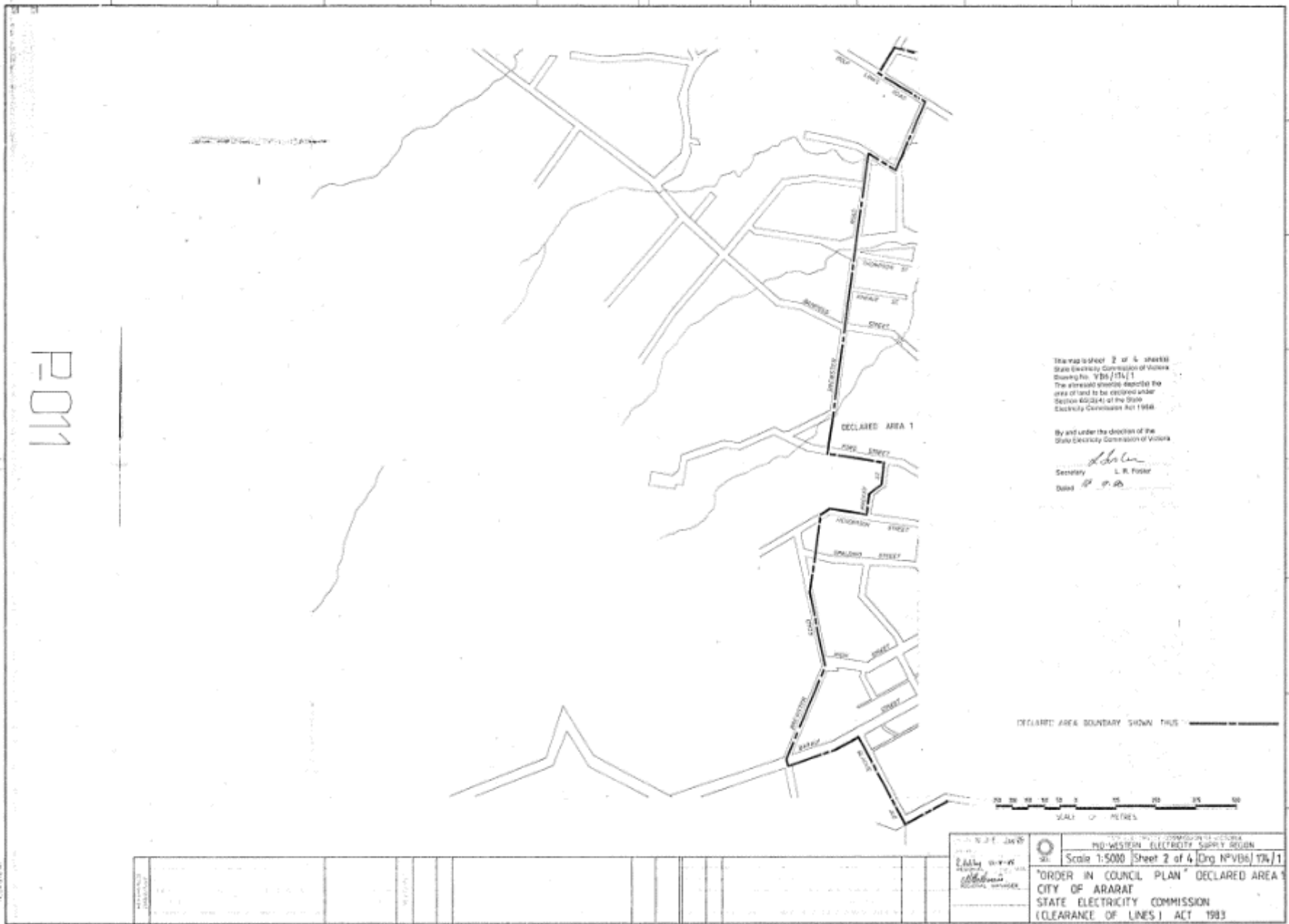
Appendix 1 - Overlays-Ararat Area



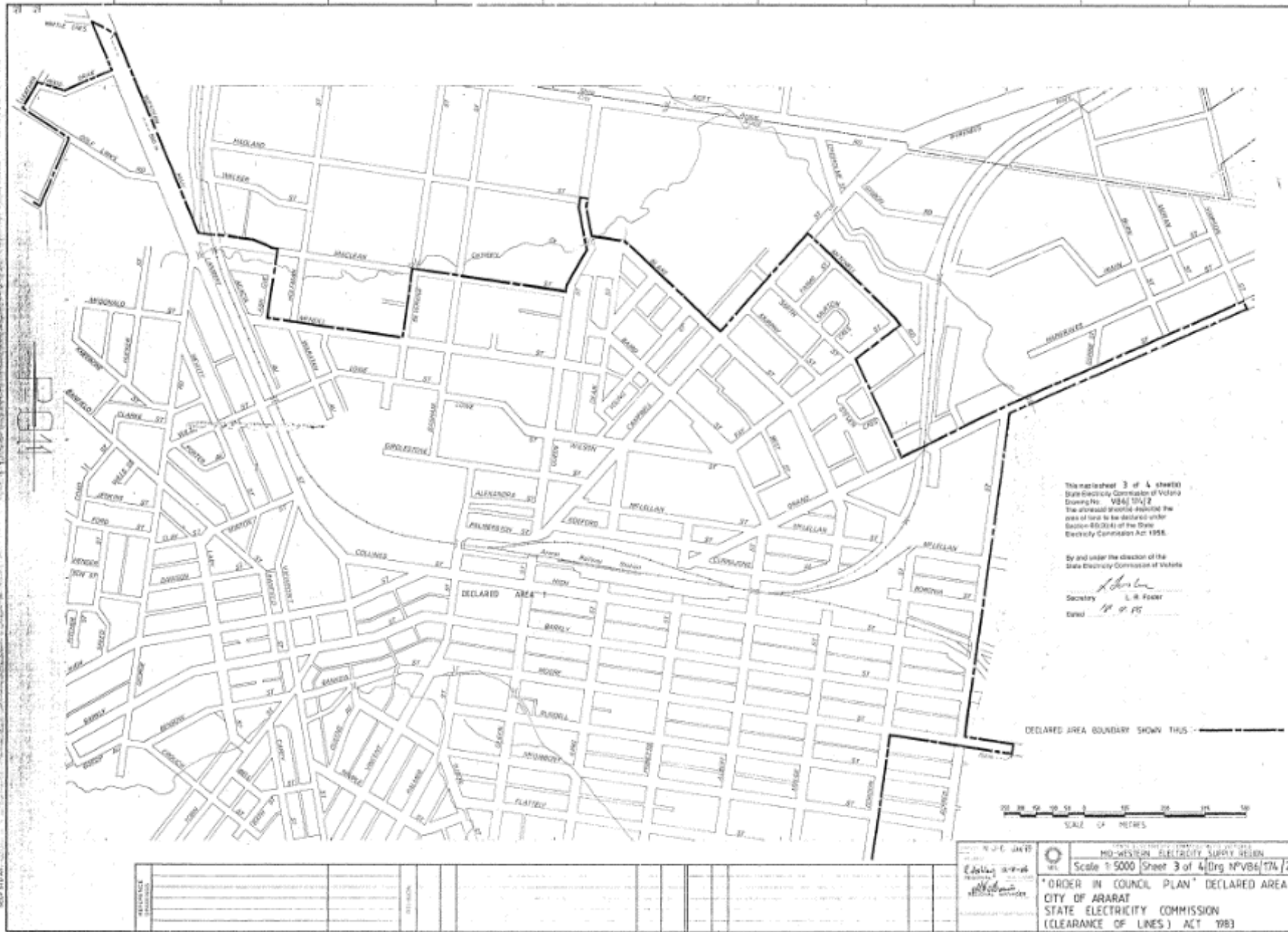


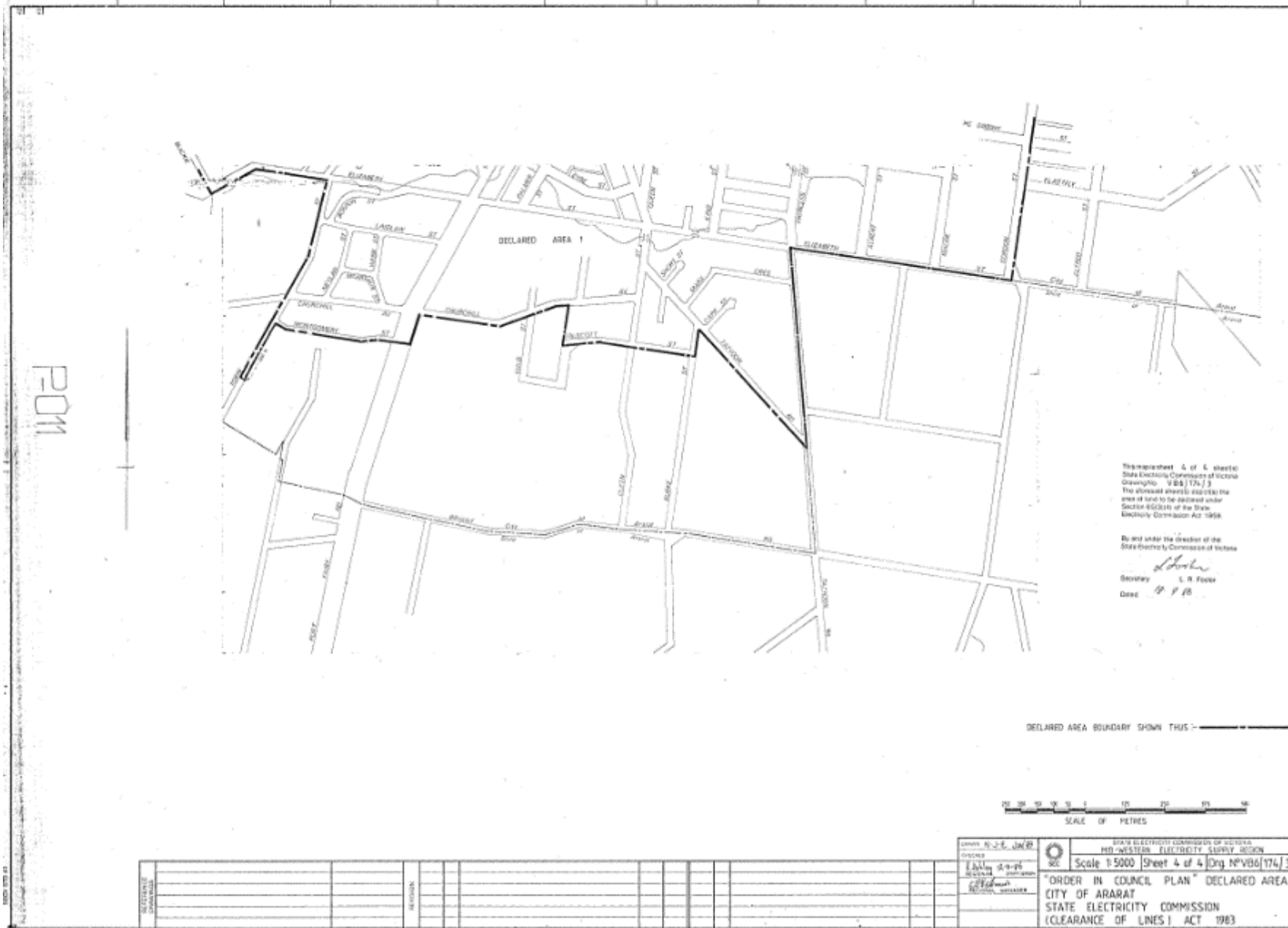
Appendix 2 - Maps of Declared Area – Ararat
(Refer to <https://lineclearance.esv.vic.gov.au/ELSDefault.aspx> for better quality map)





P011





Appendix 3 - Street Listing for Declared Areas of Ararat

Acacia Ave	Fay St	Mimosa Ave	Walker Rd
Albert St	Flattely St	Minton St	Waratah St
Alexandra Ave	Ford St	Montgomery St	Warrak Rd
Alfred St	George Rd	Moore St	Wattle Cres
Ash Grove	Gibson Rd	Moran St	Webb St
Baird St	Girdlestone St	Mortlake-Ararat Rd	Wild St
Banfield St	Golf Links Rd	Mount St	Wilmot St
Banksia St	Gordon St	Mountain View Crt	Wilson St
Barkly St	Gorrie St	Mulcahy Rd	Young St
Barkly St West	Gossip Ave	Murphy St	
Basham St	Grano St	Neylan St	
Bath St	Grevillea Crt	Nichol St	
Beauville St	Hadland St	Nott Rd	
Bell St	Hakea St	Palmer St	
Benbow St	Hargreaves St	Palmerston St	
Best St	Heath St	Park Rd	
Beveridge St	Henderson St	Pitcher St	
Blackie Ave	Hewitt St	Plant St	
Blackwood Crt	High St	Port Fairy Rd	
Blake St	High St West	Princes St	
Boberski Close	Hucker St	Queen St	
Bonnin Ave	Ingor St	Queen St South	
Boronia St	Irwin St	Queens Ave	
Brewster Rd	Jenkin St	Railway Rd	
Bryant Rd	Kennedy St	Redgum Drive	
Bulte St	Kimbarra Crt	Robinsons Lane	
Burke Rd	King St	Rotary Ave	
Burn St	Kneale St	Rowan St	
Campbell St	Kneebone St	Rundell St	
Capp St	Kofoed St	Scherger Cres	
Carey St	Laby St	Short St	
Cemetery Rd	Laidlaw St	Simpson St	
Chisolm Grove	Lambert St	Smith St	
Churchill Ave	Langford St	Spalding St	
Clarke St	Leatherwood Drv	Speed St	
Clay St	Ligar St	Stevens Cres	
Clematis Rd	Lobelia Drive	Tatyoan Rd	
Coad St	Lowe St	Taylor St	
Collings St	Mackay St	Tecoma St	
Coral St	Margaret St	Temple St	
Crouch St	Marx Cres	Thomas St	
Currajong Ave	Maude St	Thompson St	
Dawson St	McArthur St	Timmins St	
Dean St	McDonald St	Tobin St	
Dickinson Rd	McGibbony Crt	Toutcher St	
Elizabeth St	McGibbony St	Truscott St	
Ellerker Ave	McLean St	Tuson St	
Eucalypt Crt	McLellan St	Vanstan St	
Eyre St	McNeil St	View Point St	
Mitchell Rd	Melaleuca Crt	Vincent St	

Appendix 4 - Indigenous & Significant Trees Near Powerlines

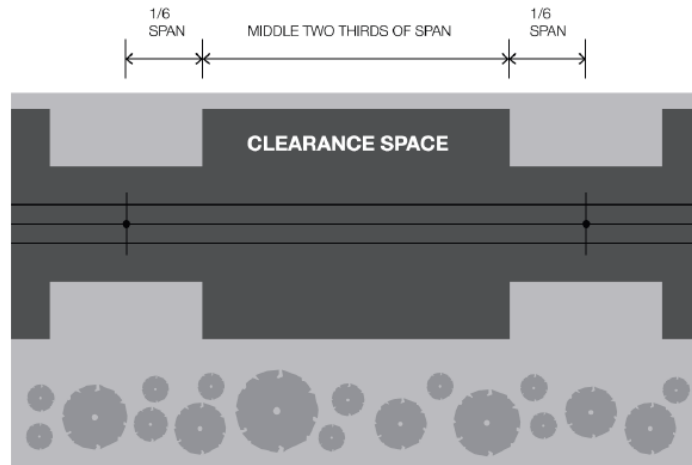
Indigenous Trees					
Road Name	Pole Number	Street Number (nearest)	Botanical Name	Common Name	Type of Powerline
Grano St	51669	145	Eucalyptus species	Yellow Box	Serv.
Bellingham Hills Rd	78453	33	Eucalyptus species	Narrow Leaf Pepper	Serv.
Burn St	51355	15	Eucalyptus species	Yellow Box	Serv.
Lambert St	952768	149	Eucalyptus species	Apple Box	Serv.
Golf Links Rd	52418	NA	Eucalyptus species	Apple Box	Serv.
Golf Links Rd	52421	15	Eucalyptus species	Apple Box	HV/LV Serv.
Wattle Cres	52438	12	Eucalyptus species	Apple Box	Serv.
Selwood Rd	51444	cnr	Eucalyptus species	Cabbage Box	Serv.
Selwood Rd	NA	13	Eucalyptus species	Cabbage Box	LV
Selwood Rd	51445	19	Eucalyptus species	Cabbage Box	Serv.
Selwood Rd	51448	29	Eucalyptus species	Cabbage Box	Serv.
Brewster Rd Nth	52001	41	Eucalyptus species	Cabbage Box	Serv.
Burke Rd	53349	NA	Eucalyptus species	Cabbage Box	Serv.

Significant Trees					
Road Name	Location on Road	Street Number (nearest)	Botanical Name	Common Name	Type of Powerline
Tuson Street	West	21	Eucalyptus maculata	Spotted Gum	LV
Barkly St	North	31	Auracaria heterophylla	Norfolk Island Pine	LV ABC
Barkly St	North	33	Auracaria heterophylla	Norfolk Island Pine	LV ABC
Barkly St	North	37	Auracaria heterophylla	Norfolk Island Pine	LV ABC
Barkly St	North	37	Auracaria heterophylla	Norfolk Island Pine	LV ABC
Barkly St	North	41	Auracaria heterophylla	Norfolk Island Pine	LV ABC
Barkly St	North	41/43	Auracaria heterophylla	Norfolk Island Pine	LV ABC
Barkly St	North	43/1	Auracaria heterophylla	Norfolk Island Pine	LV ABC
Barkly St/Banfield St	North	1	Auracaria heterophylla	Norfolk Island Pine	LV ABC

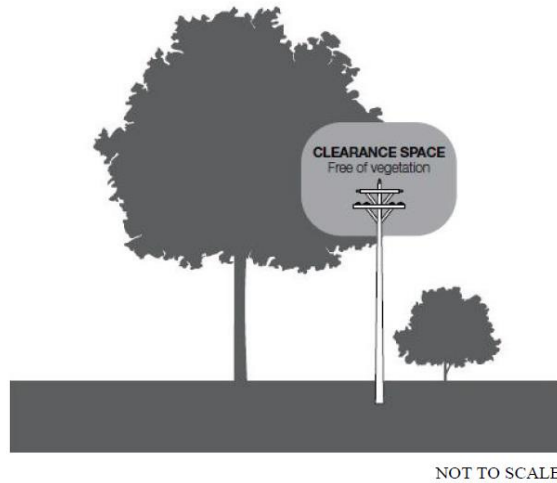
Appendix 5 - Minimum Clearance Spaces

Source-Electrical Safety (Electric Line Clearance) regulations 2020

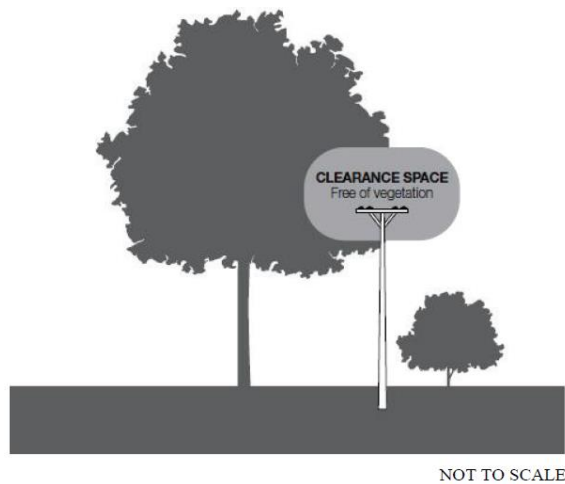
PLAN VIEW OF ELECTRIC LINES IN ALL AREAS



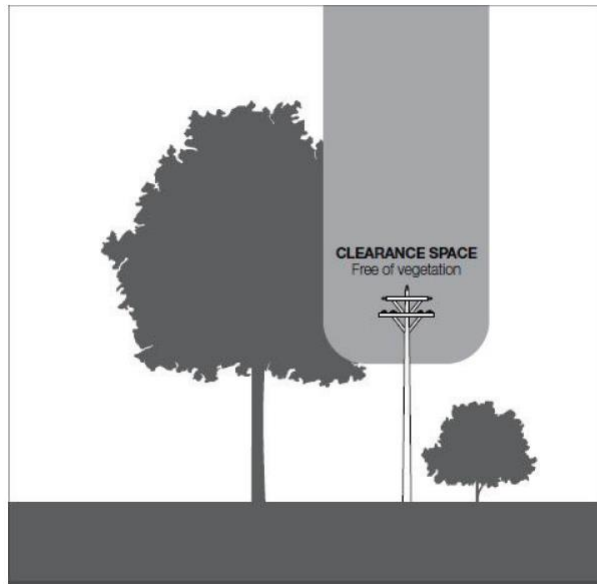
INSULATED ELECTRIC LINES IN ALL AREAS AND UNINSULATED HIGH VOLTAGE ELECTRIC LINES (OTHER THAN 66 000 VOLT ELECTRIC LINES) IN LOW BUSHFIRE RISK AREAS
 Clauses 24 and 26, Graphs 1 and 3



UNINSULATED LOW VOLTAGE ELECTRIC LINE IN A LOW BUSHFIRE RISK AREA
 Clause 25, Graph 2



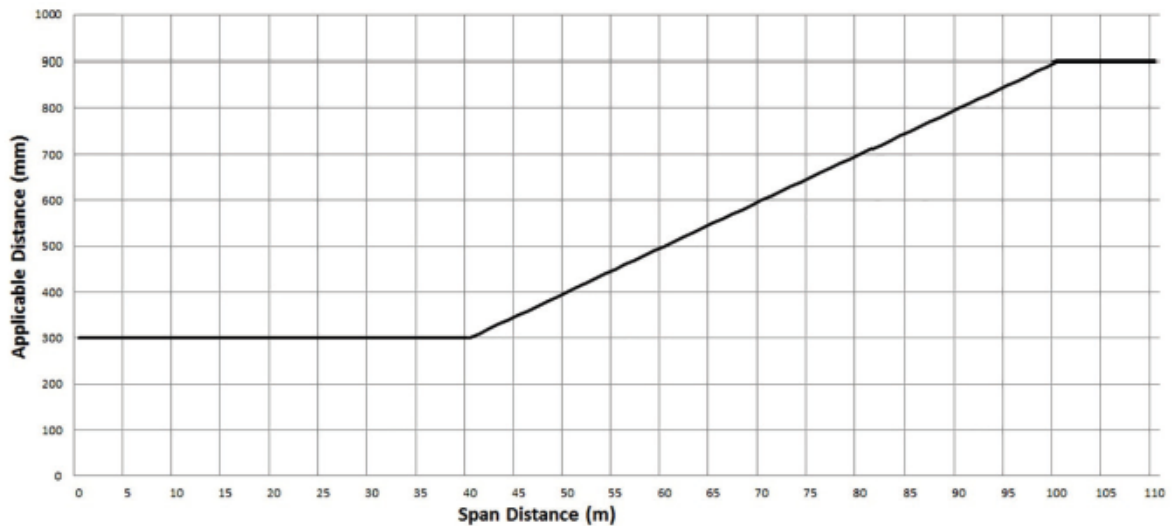
UNINSULATED 66 000 VOLT ELECTRIC LINE IN A LOW BUSHFIRE RISK AREA AND UNINSULATED ELECTRIC LINE IN A HAZARDOUS BUSHFIRE RISK AREA
 Clauses 27, 28 and 29, Graphs 4, 5 and 6



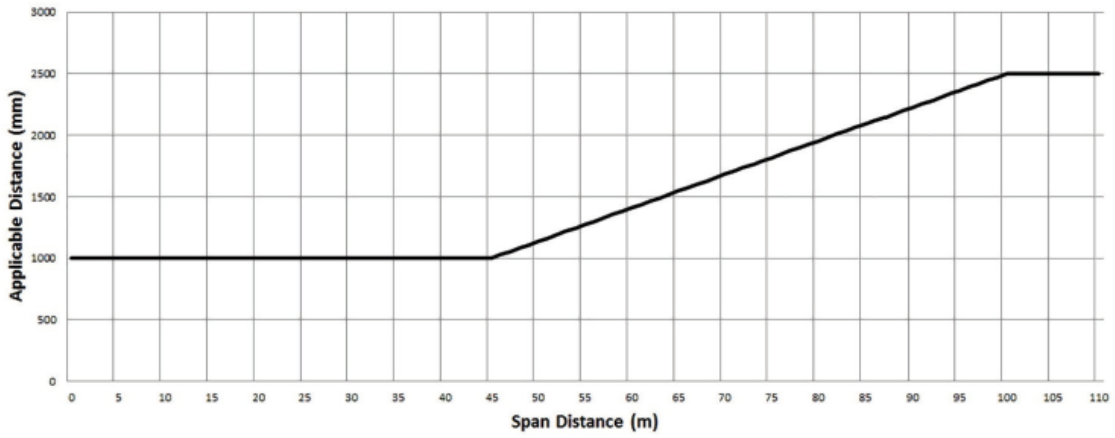
NOT TO SCALE

Note:- All graphs represent the applicable distance for middle two thirds of a span of an electric line

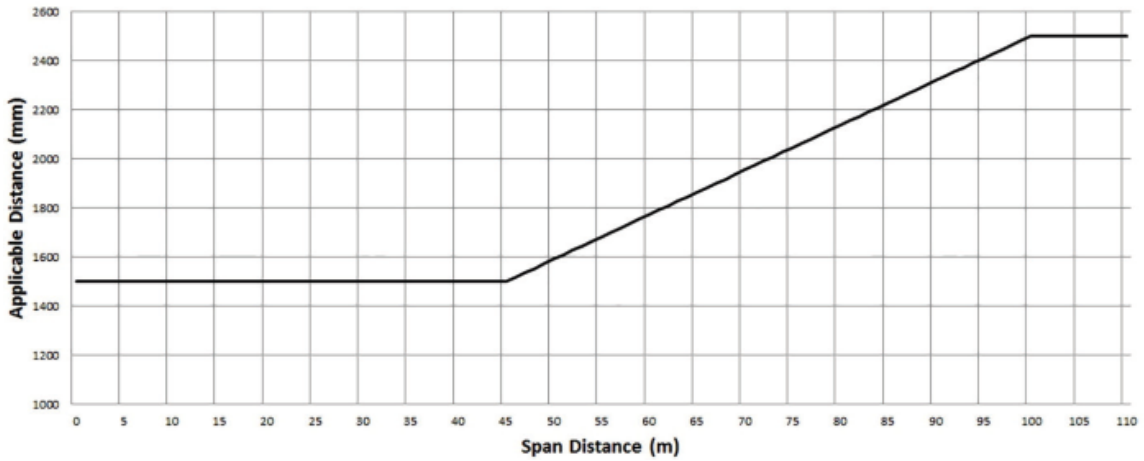
GRAPH 1—INSULATED ELECTRIC LINES IN ALL AREAS
 Clauses 3 and 24



GRAPH 2—UNINSULATED LOW VOLTAGE ELECTRIC LINE IN LOW BUSHFIRE RISK AREA
 Clauses 3 and 25

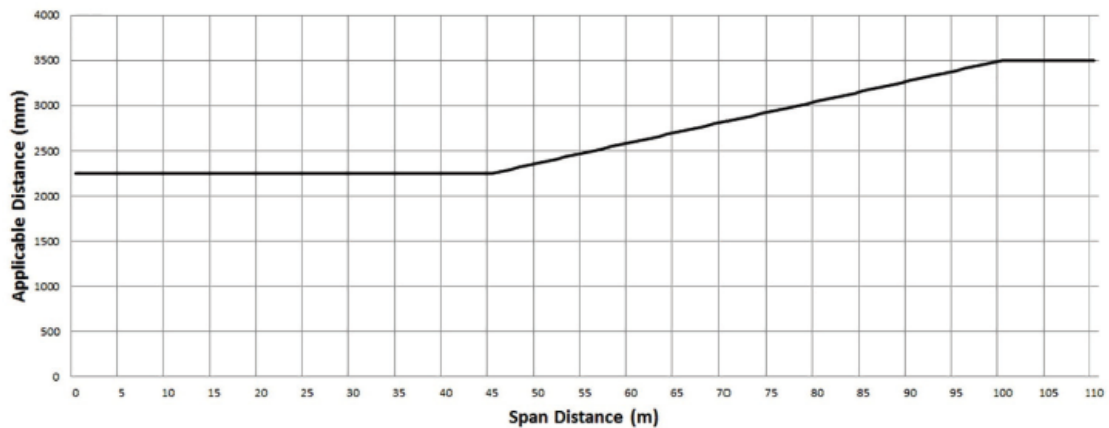


GRAPH 3—UNINSULATED HIGH VOLTAGE ELECTRIC LINE (OTHER THAN A 66 000 VOLT ELECTRIC LINE) IN
 LOW BUSHFIRE RISK AREA
 Clauses 3 and 26

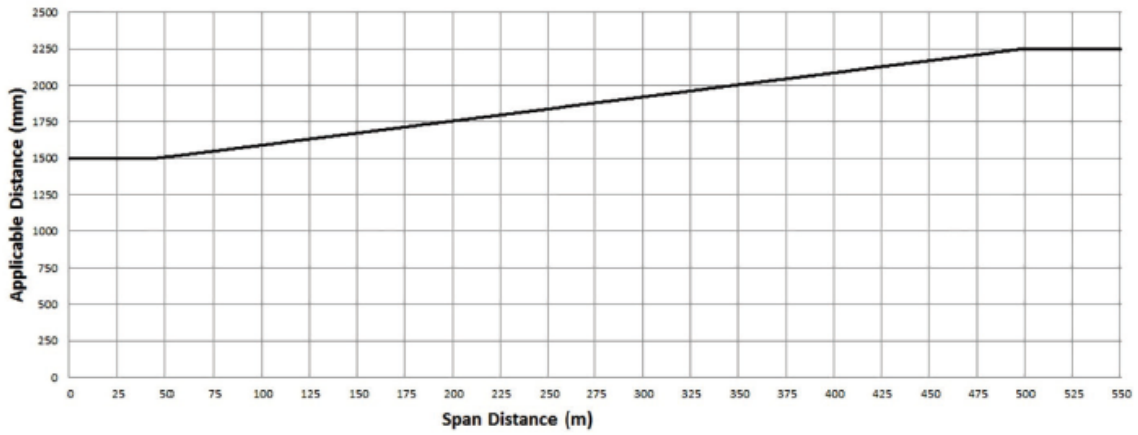


GRAPH 4—UNINSULATED 66 000 VOLT ELECTRIC LINE IN
 LOW BUSHFIRE RISK AREA

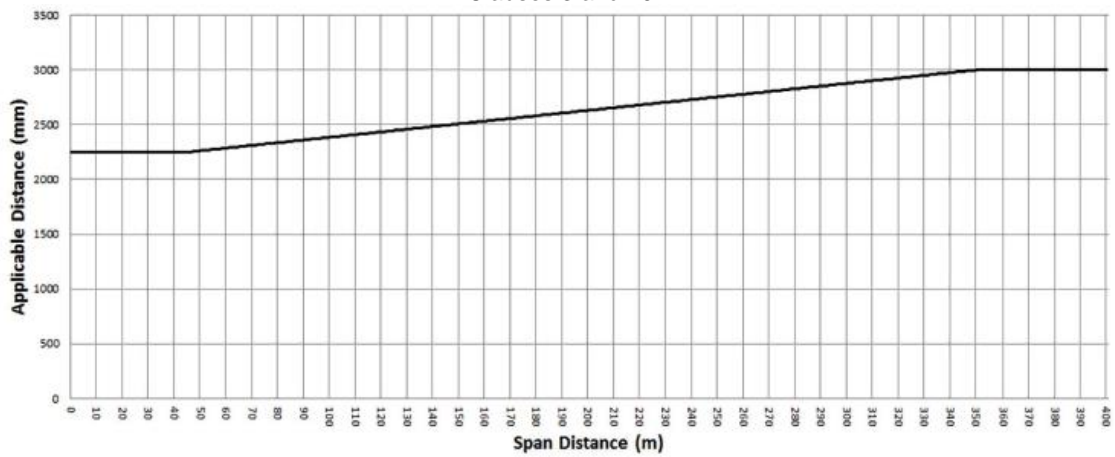
Clauses 3 and 27



GRAPH 5-UNINSULATED LOW VOLTAGE AND HIGH VOLTAGE ELECTRIC LINE
 (OTHER THAN A 66 000 VOLT ELECTRIC LINE) IN HAZARDOUS BUSHFIRE RISK AREA
 Clauses 3 and 28



GRAPH 6—UNINSULATED 66 000 VOLT ELECTRIC LINE IN
 HAZARDOUS BUSHFIRE RISK AREA
 Clauses 3 and 29



Appendix 6 – Standard Notice - Commencement

POWERLINE CLEARANCE

The Ararat Rural City Council will shortly begin its annual program of pruning street trees and trees on Council land to meet the statutory clearance space requirements around electricity lines.

Some debris may be left temporarily under the trees but will be removed from the site before the end of the week.

The program will commence 14 days from the date of this notice and will be completed within 60 days.

Councils Electric Line Clearance Management Plan can be accessed via the Councils Website or is available from the customer service team at 59 Vincent St Ararat.

For further information regarding this process please contact Jason Cleary on 5355 0200.

DR TIM HARRISON

CHIEF EXECUTIVE OFFICER

Appendix 7 – Standard Notice - Delayed Works

POWERLINE CLEARANCE

Due to extenuating circumstances Ararat Rural City Council advises the annual program of pruning street trees and trees on Council land to meet the statutory clearance space requirements around electricity lines has been delayed and will not be completed within the 60 day period.

Council anticipates a further **XX** days will be required to complete the program to the required standard.

Councils Electric Line Clearance Management Plan can be accessed via the Councils Website or is available from the customer service team at 59 Vincent St Ararat.

Council apologises for any inconvenience, for further information regarding this process please contact Jason Cleary on 5355 0200.

DR TIM HARRISON

CHIEF EXECUTIVE OFFICER

Appendix 8 - Notification-Vegetation Removal



Ararat Rural City

NOTICE OF CLEARING (REMOVAL)

as per

The Electricity Safety (Electric Line Clearance) Regulations 2020

Date _____

Address _____

Dear

The Ararat Rural City will shortly begin its yearly program of pruning the street tree(s) throughout the municipality to meet the statutory clearance space requirement around the electric line.

It has been determined that the street tree in front of your residence/property is an inappropriate species of tree to grow beneath the electric lines. The minimum clear space distance of _____ mm plus an allowance for regrowth required to meet the requirements of the Code cannot be achieved without compromising the health of the tree. Therefore, the Council proposes to remove the tree and replant with a more appropriate species next winter.

The Code requires the Council to notify you personally. Please contact our responsible representative on 0408 178 169 within 14 days of the date of this notice. Our representative will meet with you and discuss the removal of the tree.

Information on, or a copy of, the Electricity Safety (Electric Line Clearance) Regulations 2020 can be obtained from our Council representative on 5355 0200

Comments: _____

Appendix 9 - Notification Urgent Cutting



Ararat Rural City

URGENT CUTTING

as per

The Electricity Safety (Electric Line Clearance) Regulations 2020

Date _____

Address _____

Dear

The Ararat Rural City has performed urgent cutting or tree removal of a tree on or near your property. This work has been performed to comply with the Electricity Safety (Electric Line Clearance) Regulations 2020.

The reason for this non-compliance is

The tree is / was located at

This tree was last inspected for compliance on

The Code requires the Council to notify you personally.

If you would like further explanation of the works performed, information on, or a copy of, the Electricity Safety (Electric Line Clearance) Regulations 2020 please contact our Council representative on 0418 215 188.

Comments: _____



ARARAT RURAL CITY COUNCIL ELECTRIC LINE CLEARANCE MANAGEMENT PLAN
2024-2025

Ararat Rural City

Appendix 10 - Powerline Clearance Inspection (preseason)

Street	St No	Pole No.	Art No.	Tree Type	Fauna Activity	No to cut	HV/LV	LV	Serv	Sag/Sway Allowance	Inspection/Audit by	Notes	Date



ARARAT RURAL CITY COUNCIL ELECTRIC LINE CLEARANCE MANAGEMENT PLAN 2024-2025

Ararat Rural City

Appendix 11 - Daily Works Report

Ararat Parks & Gardens – Line-clearance-Daily Works Report Daily Works Report

Date: / /

To be handed to Supervisor at the end of each day

ART No.	Street	No.	Tree type	No. cut	HV/LV	LV	Serv.	Sag/Sway Allowance (mm)	Completed By	Date	Comments



Weekly Audit of Line clearance Program

Date: / /

ART No.	STREET	No.	Worksite Management/HSE	Tree type	Voltage Identified	Affected people notified	Cut to clearances	Allow for regrowth	Any customer complaints about	SADS	EWP Compliance	Area left tidy	Audited by	Date



Appendix 13 - Training Matrix

Status	Certificate II ESI Vegetation Control	Blue Book Training	Operate Maintain Chainsaw	Licence operates boom type EWP	Apply OHS	Environment /Sustainability compliance	Safe work near live electrical appliances	Plan removal of vegetation exclusion zone	Use EWP to cut Vegetation in ESI environment	Safety Compliance Veg control in an ESI environment	Apply pruning techniques near live electrical apparatus
	UET20321	Incl in UET20321	RTC2304A	TLILIC2005	UEENEEE101B	UETTDREL13	UETTDREL14	UETTDRC23	UETTDRC25	UETTDRC27	UETTDRC33
Team Leader	X	X	X	X	X	X	X	X	X	X	X
• Crew 1	X	X	X	X	X	X	X	X	X	X	X
• Crew 2	X	X	X	X	X	X	X	X	X	X	X



Authorised by: Dr Tim Harrison

Signed:

Chief Executive Officer
Ararat Rural City Council